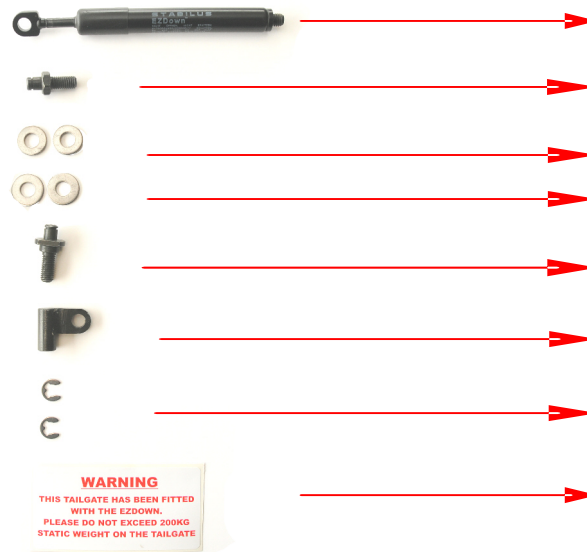


# The EZDown installation guide for TOYOTA HILUX 2005 to current.



<u>Part description</u>	<u>Qty</u>	<u>Part number</u>
Damper	1	013393
Lower stud	1	ED0003
1mm Washer	2	ED0004
2mm Washer	2	ED0005
Upper stud	1	ED0002
End fitting	1	ED0001
5mm Circlips	2	ED0206
Warning Sticker	1	ED0006

## STABILUS



There are two parts of this vehicle that you will be working on:

- A/ Tail gate pillar
- B/ Tail gate bracket hinge

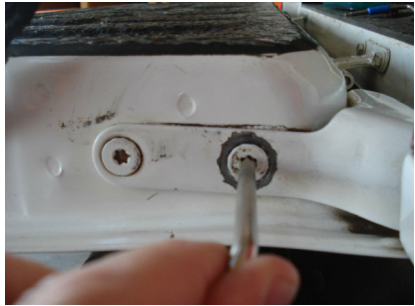
Please note the safety guidelines with reference to loading weight on tailgate after installation of EZdown .

Visit our website at [www.ezdown.co.za](http://www.ezdown.co.za) to see the EZDown in action.

Family Safety . Convenience . Easy to assemble and install . Hands free lowering . Eliminates damage to vehicle . Cost effective

## STEP 1

### Remove hinge stud



## STEP 2

Replace hinge stud with EZDown stud and use 1mm or 2mm washer for correct alignment.



## STEP 3

Remove tailgate cable stud



## STEP 4

Replace tailgate cable stud with the EZDown upper stud.



## STEP 5

Place cable on stud with 1mm or 2mm washer in order to align correctly



## STEP 6

Place EZDown with piston rod facing down onto the upper and lower studs respectively



## STEP 7

### Secure Damper



Secure circlips to stud in order to hold EZDown in place at the upper and lower stud

## STEP 8

Open and close the tailgate slowly to check alignment and that the cable does not interfere.



## STEP 9

Fit the warning sticker to the tailgate to ensure the tailgate does not get overloaded.



## STEP 10

Please ensure that your two OEM parts are safely stored.